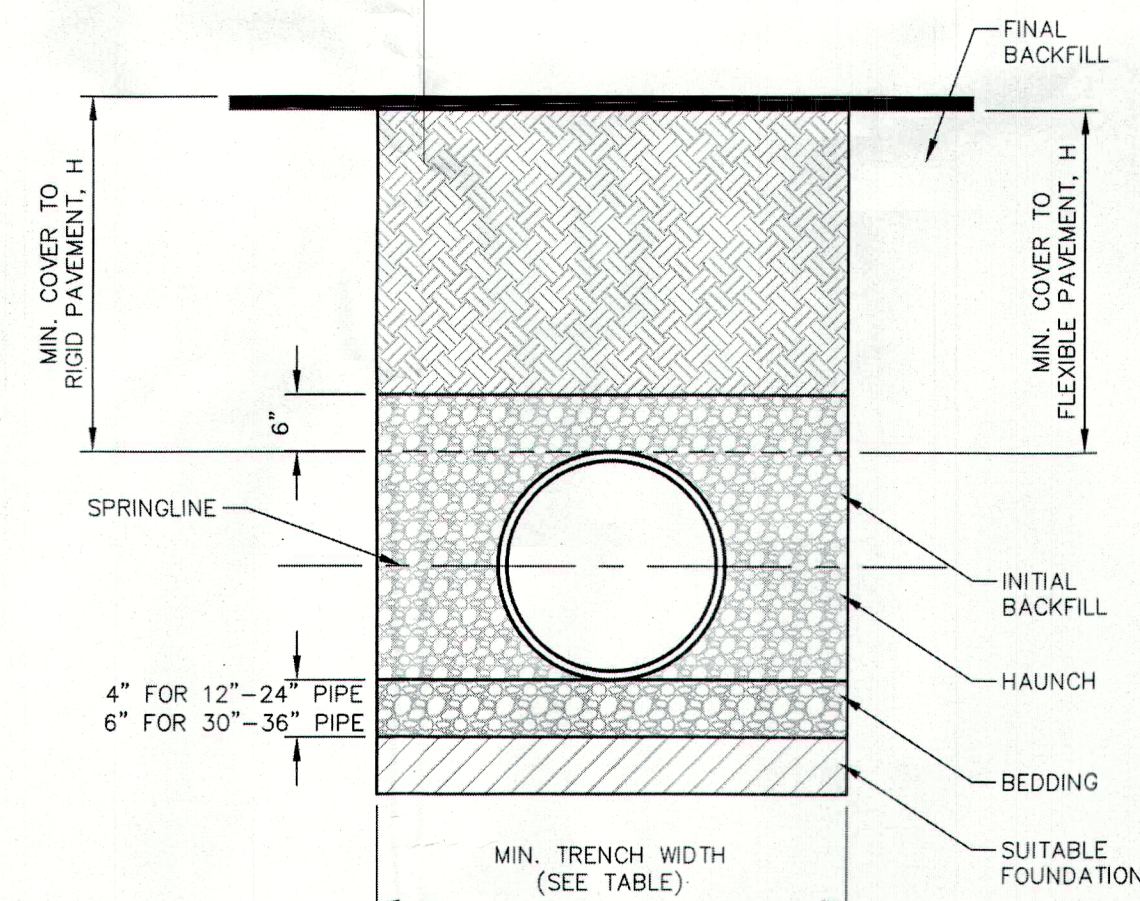
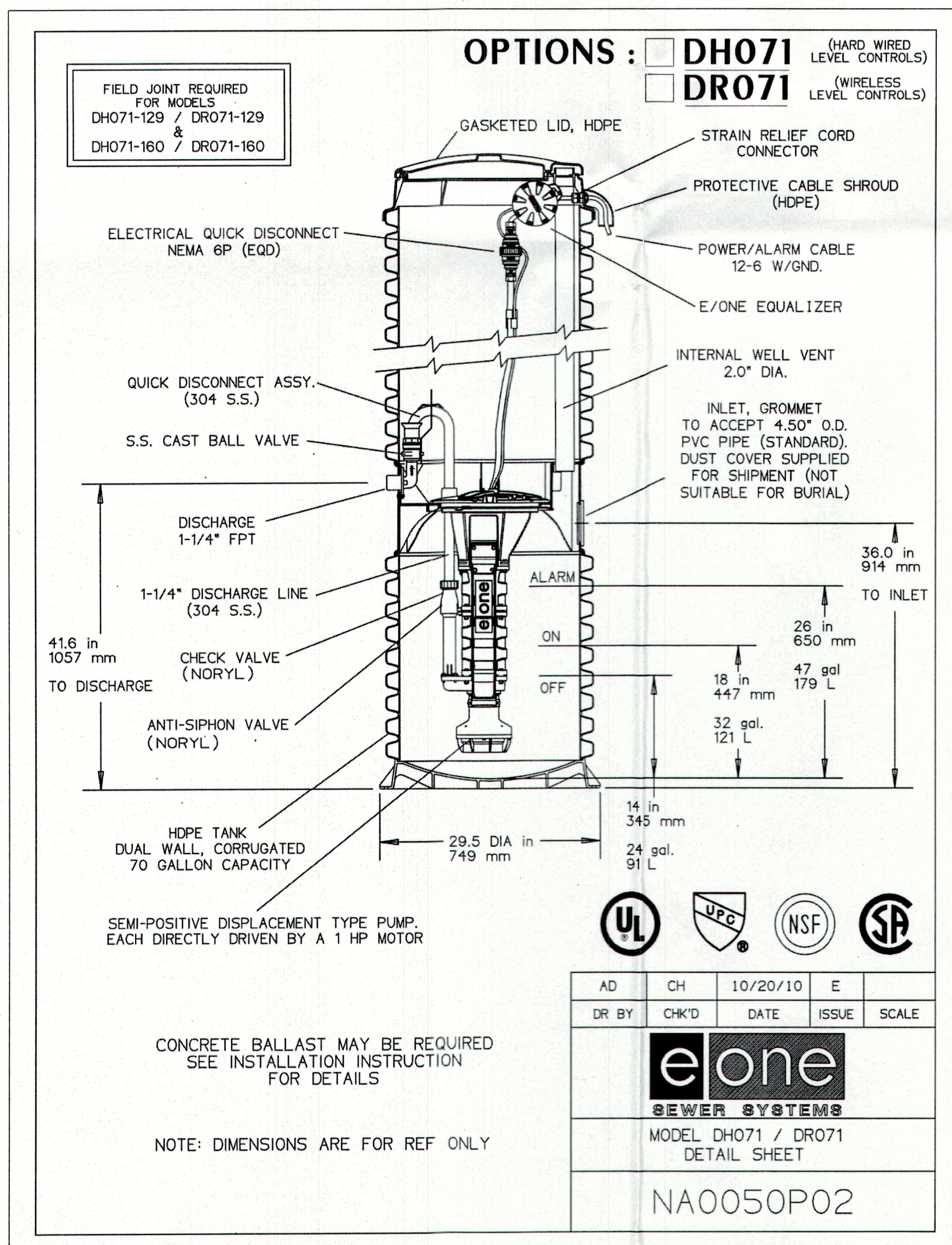
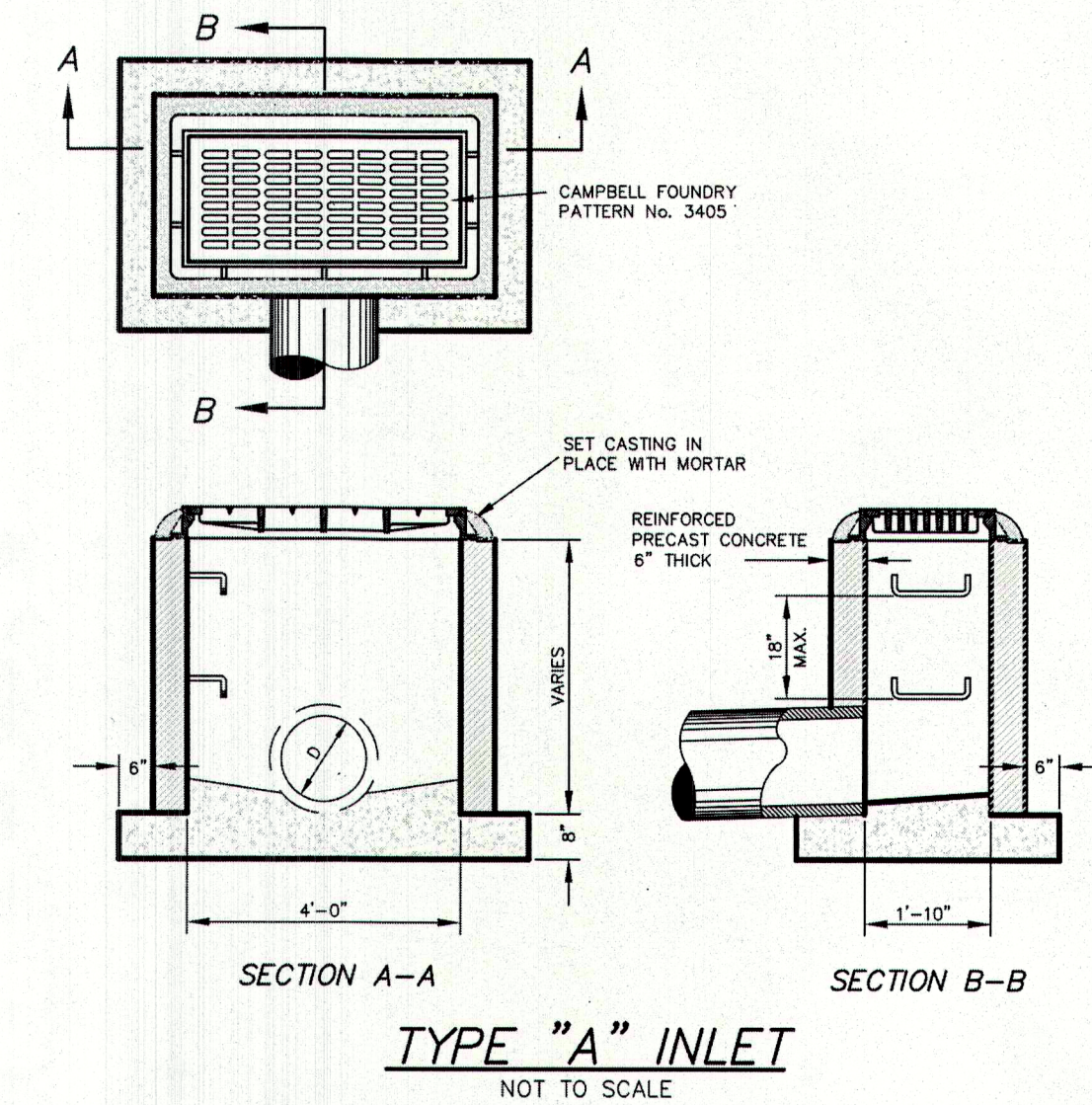
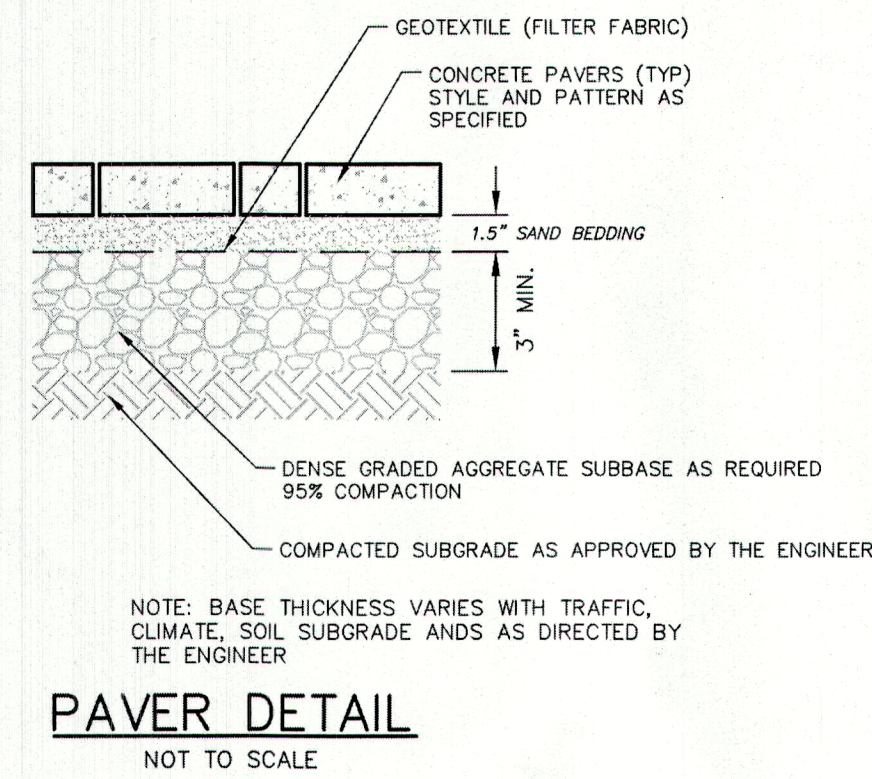
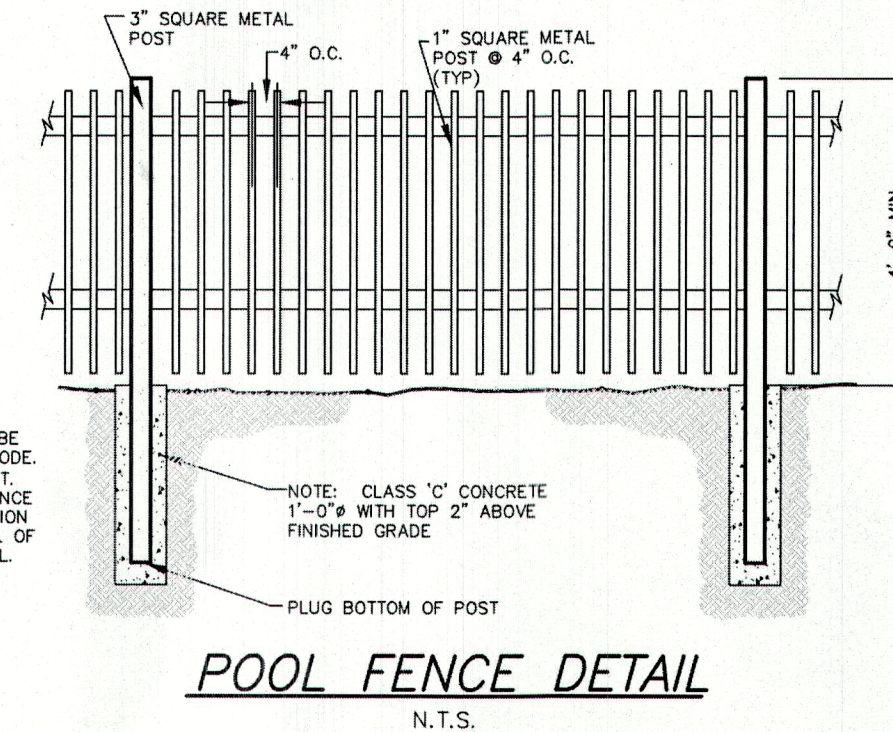


NOTES:
 1. SELF-LATCHING GATES TO BE PROVIDED AT FENCE PER CODE. GATES TO BE 54" IN HEIGHT.
 2. APPLICANT MAY ADJUST FENCE TYPE PRIOR TO CONSTRUCTION SUBJECT TO THE APPROVAL OF THE CONSTRUCTION OFFICIAL.



RECOMMENDED MINIMUM TRENCH WIDTHS

PIPE DIAM.	MIN. TRENCH WIDTH
4"	21"
6"	23"
8"	26"
10"	28"
12"	30"
15"	34"
18"	39"
24"	48"
30"	56"
36"	64"
42"	72"
48"	80"
54"	88"
60"	96"

MINIMUM RECOMMENDED COVER BASED ON VEHICLE LOADING CONDITIONS

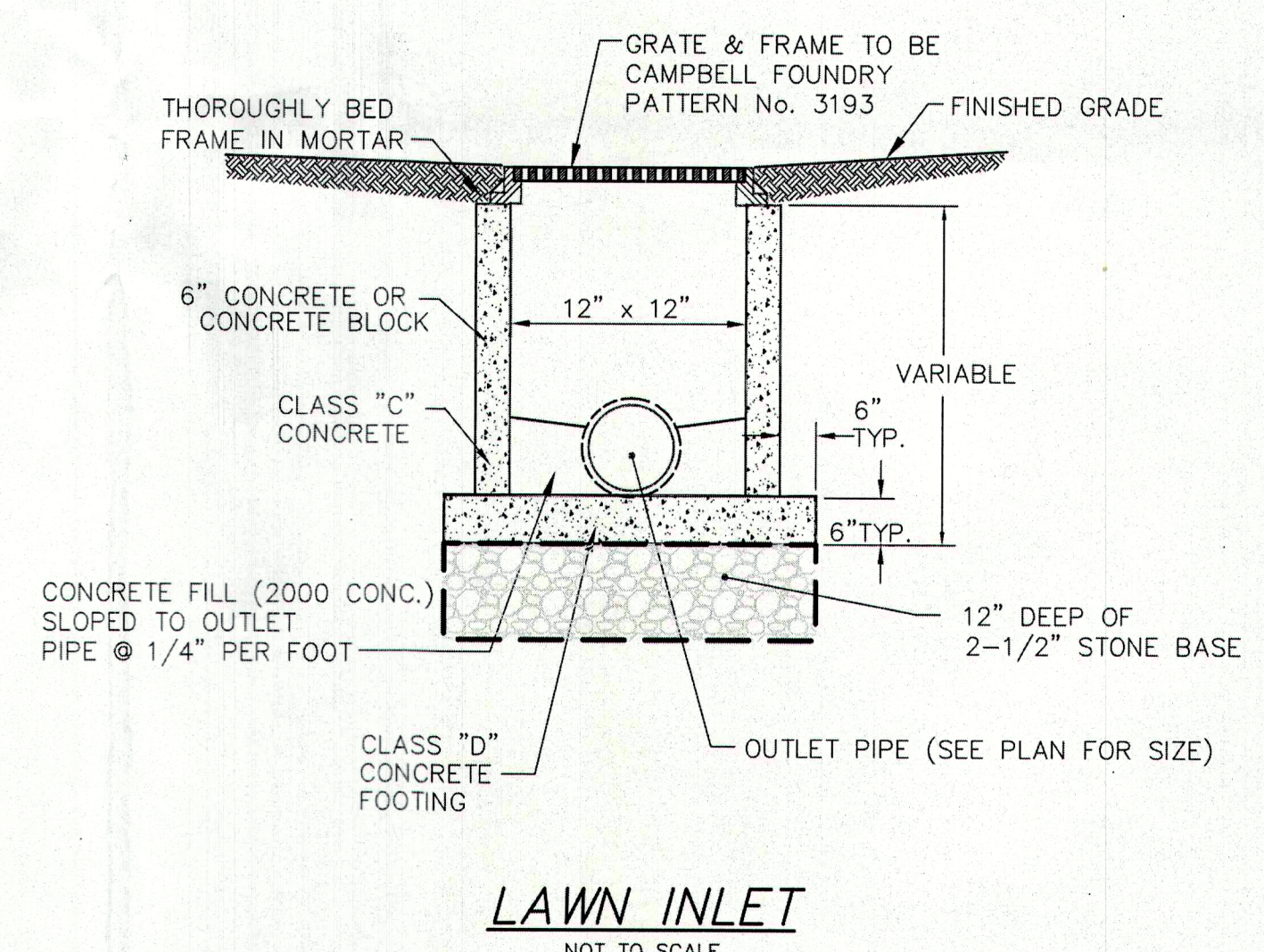
PIPE DIAM.	SURFACE LIVE LOAD CONDITION	
	H-25	HEAVY CONSTRUCTION (75T AXLE LOAD)**
12"-48"	12"	48"
54"-60"	24"	60"

**VEHICLES IN EXCESS OF 75T MAY REQUIRE ADDITIONAL COVER

MINIMUM RECOMMENDED COVER BASED ON RAILWAY LOADING CONDITIONS

PIPE DIAM.	COOPER	
	E-25	E-80**
12"-48"	12"	36"
54"-60"	24"	48"

**COVER IS MEASURED FROM TOP OF PIPE TO BOTTOM OF RAILWAY TIE
 **E-80 COVER REQUIREMENTS, ARE ONLY APPLICABLE TO ASTM F 2306 PIPE.



NOTES:
 1. ALL PIPE SYSTEMS SHALL BE INSTALLED IN ACCORDANCE WITH ASTM D2321, "STANDARD PRACTICE FOR UNDERGROUND INSTALLATION OF THERMOPLASTIC PIPE FOR SEWERS AND OTHER GRAVITY FLOW APPLICATIONS", LATEST EDITION.
 2. MEASURES SHOULD BE TAKEN TO PREVENT MIGRATION OF NATIVE FINES INTO BACKFILL MATERIAL, WHEN REQUIRED.
 3. EQUIVOCATION: WHERE THE TRENCH BOTTOM IS UNSTABLE, THE CONTRACTOR SHALL EXCAVATE TO A DEPTH REQUIRED BY THE ENGINEER AND REPLACE WITH SUITABLE MATERIAL AS SPECIFIED BY THE ENGINEER AS AN ALTERNATIVE AND AT THE DISCRETION OF THE DESIGN ENGINEER, THE TRENCH BOTTOM MAY BE STABILIZED USING A GEOTEXTILE MATERIAL.
 4. BEDDING: SUITABLE MATERIAL SHALL BE CLASS I, II OR III. THE CONTRACTOR SHALL PROVIDE DOCUMENTATION FOR MATERIAL SPECIFICATION TO ENGINEER, UNLESS OTHERWISE NOTED BY THE ENGINEER. MINIMUM BEDDING THICKNESS SHALL BE 4" FOR 4"-24", 6" FOR 30"-60".
 5. INITIAL BACKFILL: SUITABLE MATERIAL SHALL BE CLASS I, II OR III IN THE PIPE ZONE EXTENDING NOT LESS THAN 6" ABOVE CROWN OF PIPE. THE CONTRACTOR SHALL PROVIDE DOCUMENTATION FOR MATERIAL SPECIFICATION TO ENGINEER. MATERIAL SHALL BE INSTALLED AS REQUIRED IN ASTM D2321, LATEST EDITION.
 6. MINIMUM COVER: MINIMUM COVER, H, IN NON-TRAFFIC APPLICATIONS (GRASS OR LANDSCAPE AREAS) IS 12" FROM THE TOP OF PIPE TO GROUND SURFACE. ADDITIONAL COVER MAY BE REQUIRED TO PREVENT FLOATATION, FOR TRAFFIC APPLICATIONS. MINIMUM COVER, H, IS 12" UP TO 48" DIAMETER PIPE AND 24" OF COVER FOR 54"-60" DIAMETER PIPE. MEASURED FROM TOP OF PIPE TO BOTTOM OF PAVEMENT OR TO TOP OF RIGID PAVEMENT.
 7. ALL TRENCH EXCAVATION SHALL MEET OSHA TRENCHING REQUIREMENTS

HDPE PIPE BEDDING DETAIL
 NOT TO SCALE

DYKSTRA WALKER DESIGN GROUP PA
 PROFESSIONAL ENGINEERS, PLANNERS & SURVEYORS
 21 BOWLING GREEN PARKWAY, SUITE 204 - LAKE HOPATCONG, NJ 07849
 PHONE (973) 663-6540 - FAX (973) 663-0042
 WWW.DYKSTRAWALKER.COM

Mark Gimigliano
MARK GIMIGLIANO, P.E.
 PROFESSIONAL ENGINEER, N.J. LIC. NO. 24GE04767100

CONSTRUCTION NOTES & DETAILS

VENEZIA PROPERTY
 BLOCK 1306, LOT 14.01
 48 DURRELL STREET
 TOWNSHIP OF VERONA
 ESSEX COUNTY NEW JERSEY

SCALE: #####
 JOB NO.: 23070
 DRAWN BY: KLA
 CHECKED BY: MG
 DATE: 10/6/23
 SHEET NO. 3 OF 3

J. Vasko, PROJ\23123070.dwg, 02/23/24, 12:54:18PM, mark, Layout/DETAILS